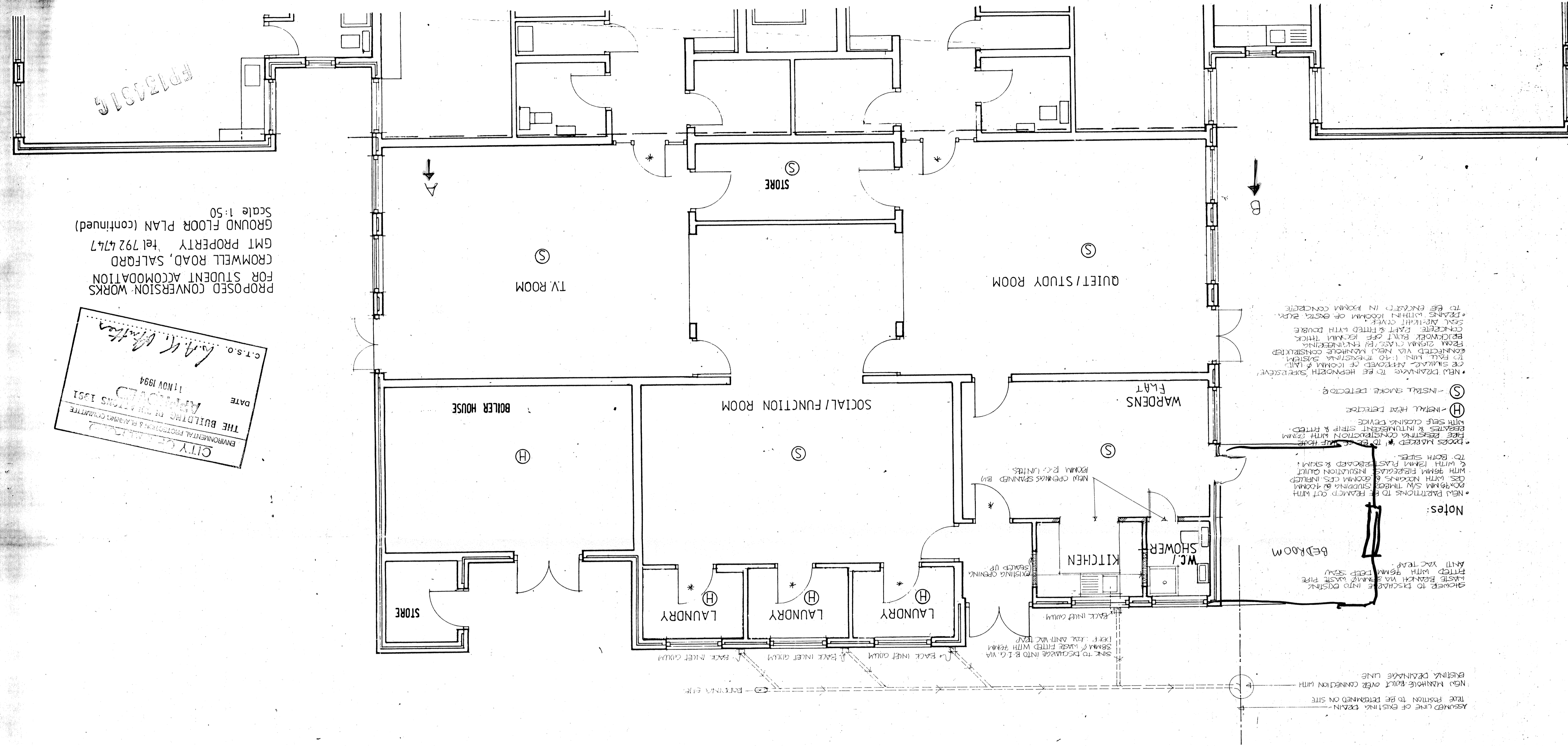


FP134376

PROPOSED CONVERSION WORKS
FOR STUDENT ACCOMMODATION
CROMWELL ROAD, SALFORD
GMT PROPERTY TEL 792 4747
Scale 1:50
GROUND FLOOR PLAN (continued)

C.T.S.O. Mark White
 DATE 11 NOV 1994
APPROVED
 THE BUILDING CONTROL OFFICERS 1991
 ENVIRONMENTAL PROTECTION & PLANNING COMMITTEE
 CITY OF SALFORD



- Notes:
- * NEW PARTITIONS TO BE REARMP. CUT WITH 40x40MM S.W. THIN WALL STUDS & INSULATED.
 - NEW PARTITIONS TO BE REARMP. CUT WITH 40x40MM S.W. THIN WALL STUDS & INSULATED. CUT WITH 40x40MM S.W. THIN WALL STUDS & INSULATED.
 - DOORS MARKED ★ TO BE REMOVED & REINSTALLED WITH SELF CLOSING DEVICE.
 - ★ - INSTALL HEAT DETECTOR.
 - ⑨ - INSTALL SMOKE DETECTOR.
 - NEW DRAINAGE TO BE HERENORTH SUPERSEVED. CONNECTED VIA NEW MANHOLE CONSTRUCTION TO EXISTING SYSTEM.
 - TO FALL INTO 140 TO EXISTING SYSTEM.
 - CONCRETE PART OFF ROOM THICK FROM 250MM TO 200MM.
 - REINFORCE CONCRETE PART OFF ROOM THICK FROM 250MM TO 200MM.
 - REINFORCE CONCRETE PART OFF ROOM THICK FROM 250MM TO 200MM.
 - REINFORCE CONCRETE PART OFF ROOM THICK FROM 250MM TO 200MM.